

FENSTERBAU FRONTALE 2026

Innovations in minimal sliding systems & luxury entrance doors



Luxury doors



Sliding systems



Windows



This year we visited Fensterbau Frontale in Germany to stay at the forefront of innovation in aluminium window and door systems.

For our high-end villa projects in the Dutch Caribbean, it's essential to continuously source solutions that combine:

- Exceptional design
- Technical performance
- Long-term durability in a Caribbean climate

Our focus was on:

- Ultra-slim sliding doors with large dimensions
- High-end entrance doors
- Manufacturers that truly differentiate in the luxury segment



We invite you to explore this brochure, which offers further insight into our company and our capabilities in delivering high-end window and door solutions for luxury villas.

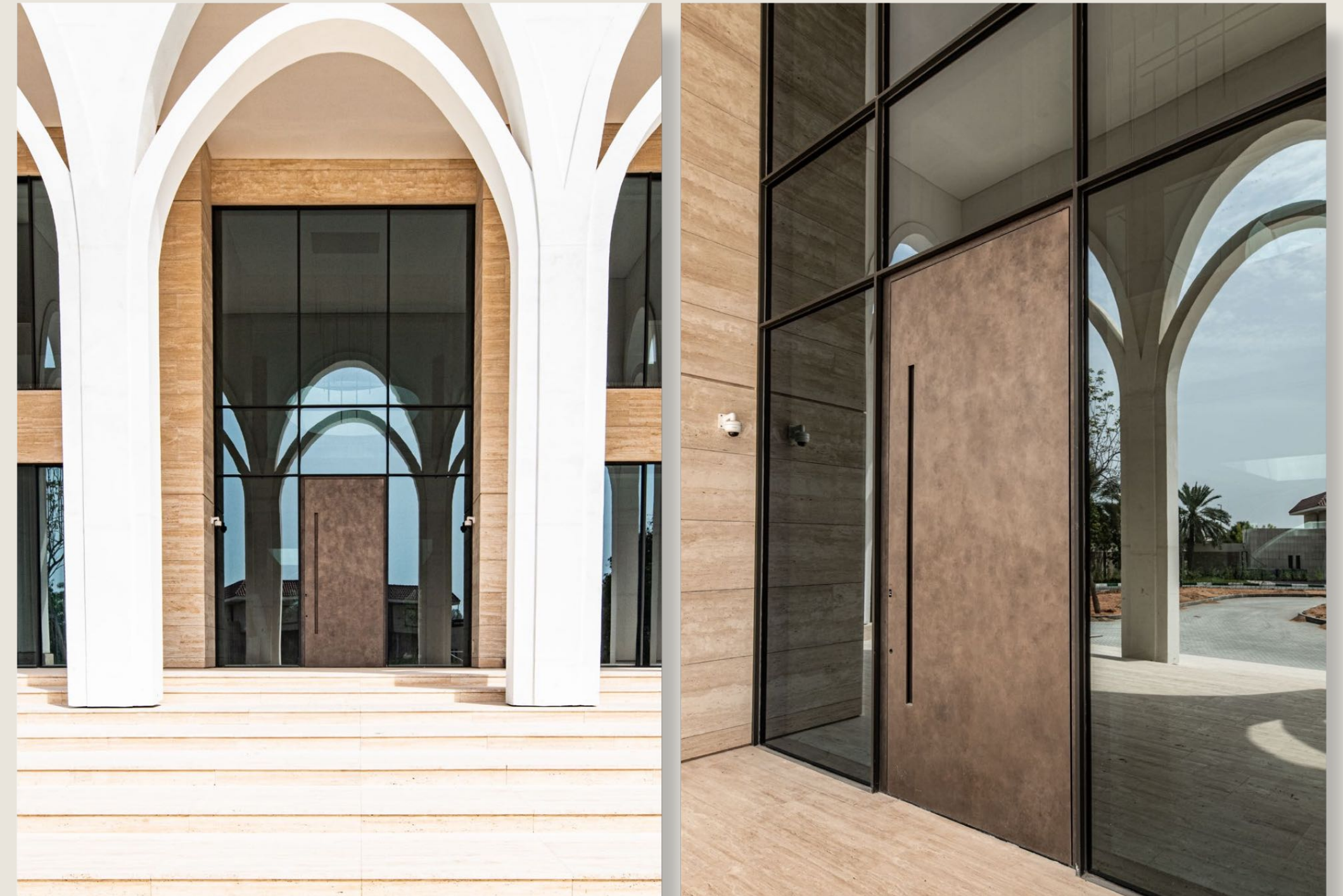
WINDOW KING
CARIBBEAN

Defining trends in luxury aluminium

What stood out this year was a clear shift towards architectural minimalism and refined detailing.

- Extremely slim sightlines (down to ± 20 mm)
- Larger (door) panel dimensions than ever before
- Fully concealed systems and hardware
- A strong focus on design-driven engineering
- Seamless integration between indoor and outdoor spaces
- Increasing possibilities for customization and personalization

Manufacturers are offering more flexibility than ever — allowing clients to tailor systems to the exact vision of their home.



Pirnar

Seamless design. Engineered precision.

Pirnar is recognized for its forward-thinking approach to entrance design. Where traditional doors end, innovation begins.

Its designs are defined by a seamless integration between door and frame, creating one unified element. No visible transitions in the corners, no distractions. Only pure form and balance.

With a strong focus on technology, customization, and detail, Pirnar delivers solutions that meet the highest standards in both aesthetics and performance. Each door is designed as part of the architecture, not as an addition to it.



WINDOW KING
CARIBBEAN



Drutex

Engineering performance at scale

Drutex continues to offer reliable and well-engineered solutions within the mid- to higher range segment.

With full control over its manufacturing process - from raw material to finished product - Drutex delivers systems that combine performance, durability, and design flexibility.

Its solutions are developed to meet the highest standards in insulation, security, and longevity, while offering a wide range of customization options to suit modern architectural demands.

For projects where reliability, scale, and technical performance are essential, we love to work with Drutex products.



WINDOW KING
CARIBBEAN

Adoro

German engineering in modern doors

Adoro focuses on the production of modern aluminium entrance doors, known for their high insulation values and advanced security features — an essential combination for both comfort and long-term performance.

In addition, their doors reflect true German engineering, utilizing Schüco profiles, which are widely recognized for their precision, durability, and performance standards.

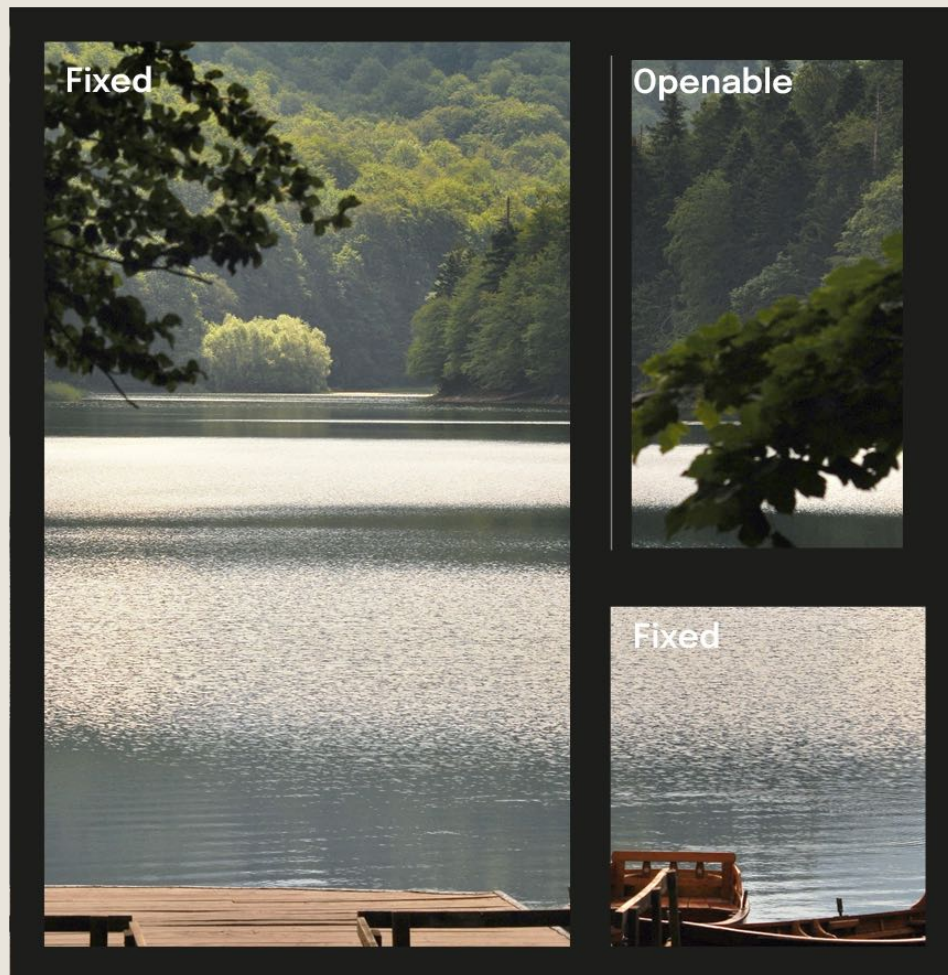
Key characteristics:

- Clean, architectural lines
- Refined finishes and materials
- Strong focus on performance and safety

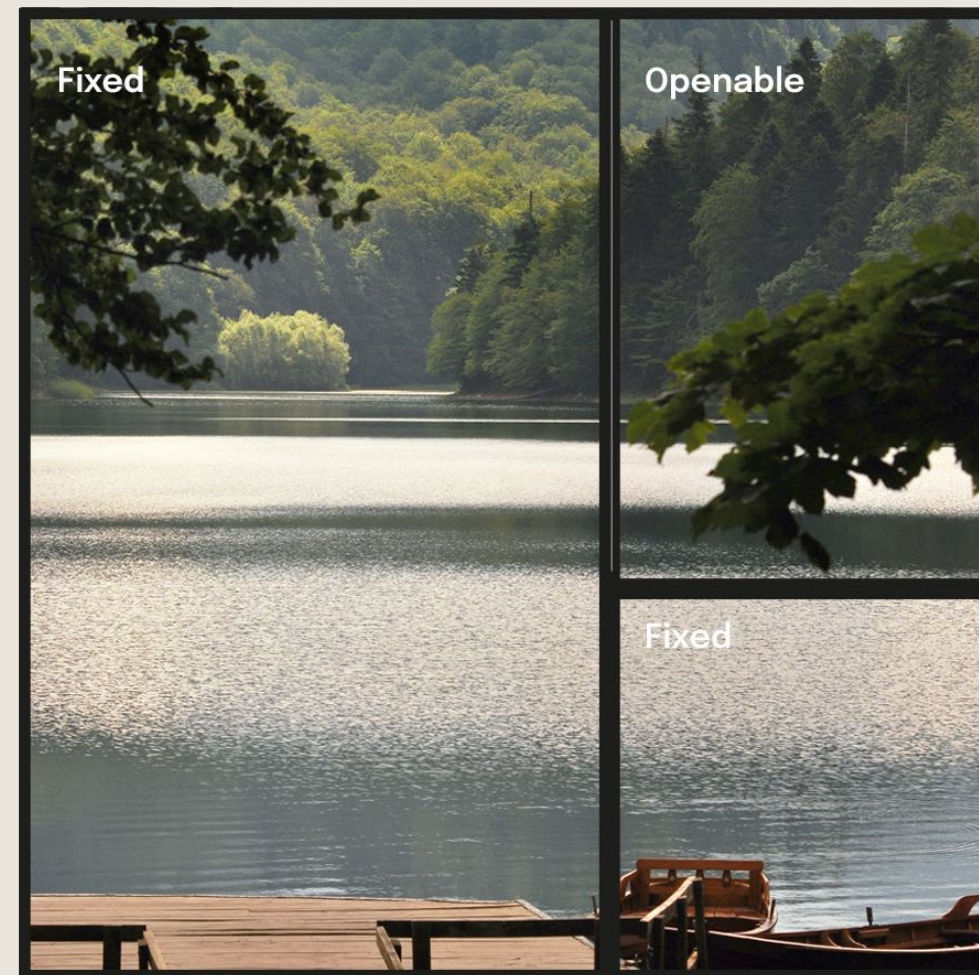




Normal window



Hansen Steel-look window



Hansen

Steel-look aluminium window and door systems from Denmark

Hansen stood out for their refined steel-look aluminium window and door systems, offering the aesthetic of steel with the performance benefits of aluminium.

Their strength lies in:

- Extremely slim profiles with a classic steel appearance
- High design flexibility for façades and fixed elements
- Strong architectural character, ideal for luxury villas

Particularly suitable for projects where a steel-look aesthetic is desired without compromising on performance or maintenance.

While Hansen does not produce their own sliding systems, their products integrate seamlessly within high-end architectural concepts.

And by combining specialized manufacturers, we are able to design fully integrated façade solutions — where aesthetics, performance, and functionality come together seamlessly.



ROKA Doors

ROKA Doors stood out as a true high-end manufacturer, delivering exceptional craftsmanship and bold design.

Their doors are not just functional elements — they are architectural statements.

All doors have;

- Impeccable detailing
- Distinctive, exclusive designs
- A clear focus on the luxury segment

These doors go beyond function. They are designed as architectural elements where material, texture, and craftsmanship come together to create a lasting impression.

Inspired by art, nature, and global materials, each design tells a story. From natural stone and metal finishes to handcrafted surfaces, every detail is carefully considered.

WINDOW KING
CARIBBEAN



Let's create something exceptional

Every project starts with a vision

Every project is unique. Defined by vision, detail, and ambition.

At Window King, we work closely with architects, developers and visionary builders to deliver:

- Carefully selected premium systems
- Technical expertise tailored to each project
- Solutions that elevate both design and performance

Request a consultation to explore the possibilities.

info@windowking.nl

+31 643745165



Projects in Aruba



WINDOW KING
CARIBBEAN

Projects in Aruba



WINDOW KING
CARIBBEAN

2026

WINDOW KING
CARIBBEAN

More than windows and doors.